

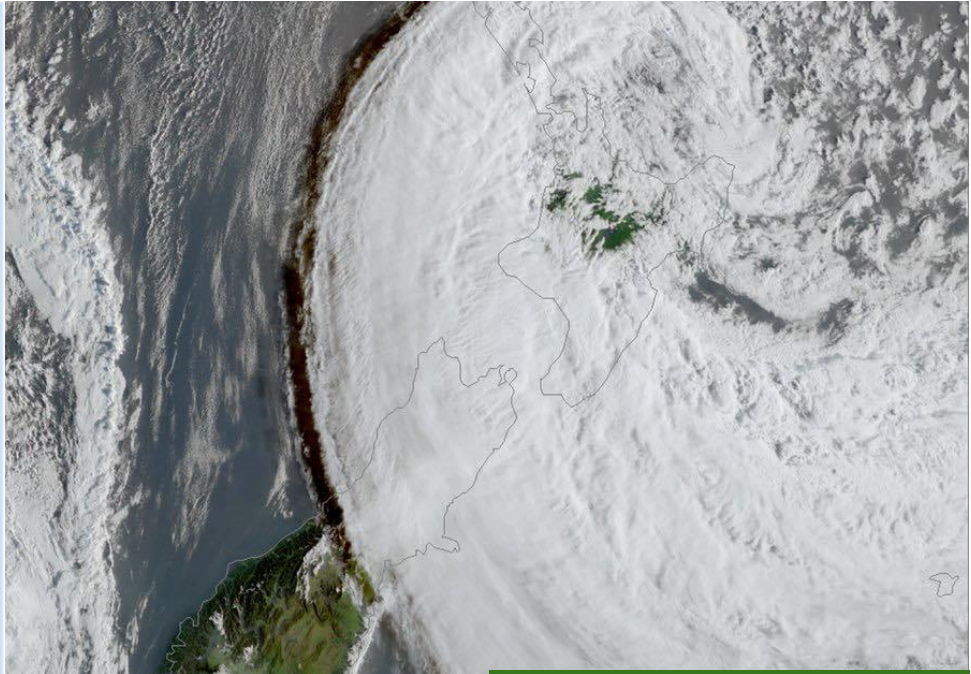


THE WORD ON WEEDS

Issue April 2023

Wild Ginger McKenzie Bay, January 2023

Kia ora koutou katoa. How's progress? Two forward and one back is a win! This important mahi is a marathon, every prolific pest plant that's pulled is positive. To give you more juice on the happenings of WANHRT we've delayed this edition to line up with other reports. Cyclone Gabrielle had a huge impact on the Whangarei Heads environment, we sincerely hope everyone has recovered, unfortunately we will be seeing more of these events. Being prepared, **looking after our community** and keeping our forests healthy, resilient and weed free should be front of mind for all of us. La Niña in Northland has seen a sodden summer which unfortunately entails prime conditions for pest plants.



GET INVOLVED AND INFORMED!

We know this newsletter is 'preaching to the converted' – everyone who receives this information is someone who cares deeply about our environment and community and has had a positive interaction with Weed Action. But, we always need more weed warriors!

Please feel free to distribute this newsletter further afield. Do you have a friend, colleague or neighbour who would like to meet new people, is concerned for the environment and could do with some weed education?

This newsletter may be a great gateway for newbies to build stronger community ties and help restore our native habitat – something we all want!

UPCOMING VOLUNTEER EVENTS::

WHAKA ORA REOTAHI - meets on the second Tuesday of the month (subject to change contact info@weedaction.org.nz) gathering at the carpark 9:00 till 11.30

TAMATERAU - meets on the fourth Wednesday of the month 9.00 till 11.30 Contact Jane Barr ph 09 4365222

MANAIA BUSH RECOVERY - meets on the 1st Saturday of the month. John Thompson 09 434 0952

OCEAN BEACH - meets on the second or third Wednesday of the month. Contact John Green: annandjohng@gmail.com

If your neighbourhood is interested in an ongoing event contact (info@weedaction.org.nz).

We will provide advice, tools, equipment & herbicide so you can take action!



Underpinning our undertaking

Weed Action volunteers also undertake the governance of the Trust. This means making sure we have enough money to do the work and that we can show how we are spending it. We also have responsibility under Health and Safety legislation to make sure we are keeping the public, volunteers and our contractors safe. So it was a celebration and big tick to recently become accredited by Site Wise after huge work from the team.

Wendy Ambury. We sadly said goodbye to Wendy a month ago after a huge push to get our accounts and H&S in order for sitewise. We already miss having her as part of the team but welcome **Ali Bryant** who will fill the role.



Mike Urlich - Project Coordinator

Mike Urlich continues to be the master at work and provides our high level ecological and landscape level advice. He is constantly initiating biofund engagements and acting as tangata whenua liaison. Everyday is different for Magic Mike depending on weather, somehow he juggles Manaia, Oakura, Reotahi, Taurikura, Pataua, Bream Bay and Ruakaka.



Jan Marshall - Parua Bay Privet Buffer Coordinator

Jan is in the 4th year of this 5 year project with Landowners involved across 144 Hectares. The 40 landowners have been active again this year controlling privet on their properties with some limitation on activity for both landowners and the Weed Contractor due to wet and windy weather conditions. The focus this year is shifting from controlling large seeding trees (except for recently signed properties) to follow-up work; cutting and stump treating poles and saplings.

Kate Hardcastle

has been learning a lot at the side of Mike Urlich and enjoying getting to know all the hardworking volunteers and landowners in our area. There are plenty more people she would like to talk to and understand how we can best support you, look out for her email or drop her a line at kate@weedaction.org.nz

Hadden Morrison

works on our newsletters, social media, roadside signage whilst trying to kill other invasive species (of the four legged kind).



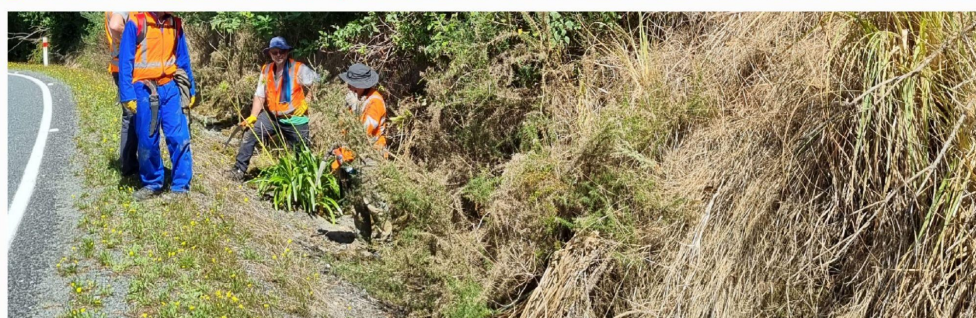
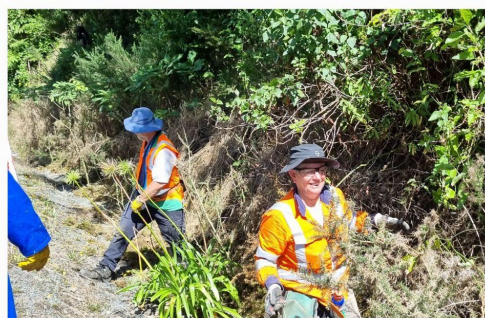
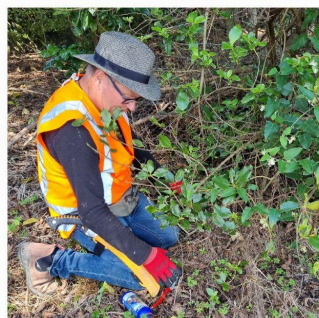
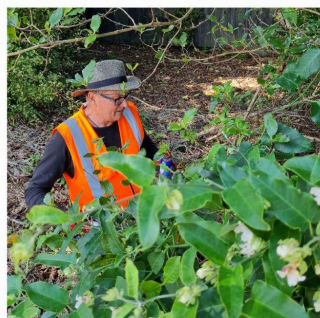
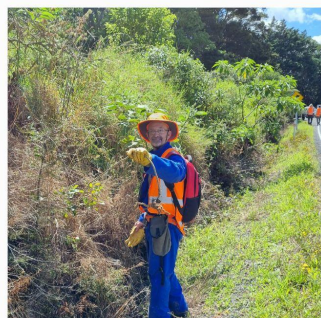
Wattle Kill Ginger and Cherry?

What do wattle, wild ginger and taiwan cherry all have in common? They're all invasive species and a threat to our biodiversity causing habitat loss and sucking up precious resources (nutrients, human and monetary).

That's why they're in our dirty dozen weeds to wound over the next three months. Look out for our signage on the streets and Facebook posts - but more importantly, get your gloves on and bolster your backyard (or bush).

Visit our website to find out how:

<https://weedaction.org.nz/>



The Strategic Weed Action Team (SWAT) have continued in enthusiasm and effectiveness, meeting at the start of every month. There was no event in January. February saw the group attending to predominantly moth plant and anything else they found along Whangarei Heads Road between W.H.A.T. and Craig Road and The Pines Golf Club and Pepi Road. In March they held the first of two SWATs along the start of Lamb Road and last week they hit Tamaterau reserve. **SWAT participant numbers continue to grow** at a manageable level and we are so grateful to these motivated and experienced volunteer.

Earlier this month Northland Regional Council hosted a **Weed Waananga** which was attended by 6 Northland conservation groups who shared success' we celebrate and challenges we face. WANHRT was represented by Chairperson Robyn Bigelow and Landowner Support Programme coordinator Kate Hardcastle. A highlight for most was Keith Salmon from EcoNet.NZ Charitable Trust's presentation about the use of the CAMS (Conservation Activity Management System) GIS Weed App that could be a real game changer for mobilising the community using better information and tools.



Northland
REGIONAL COUNCIL
Te Kaunihera ā rohe o Te Taitokerau

WEED ACTION WĀNANGA



A big cause for celebration for Weed Action and tangata whenua in February was the news that we were successful with our funding application to Foundation North. This funding is for the

Waka Hourua Matauranga Maori Collaboration and builds on the work we have been doing to build capacity of tangata whenua, develop leadership mo te taiao and grow Te Tiriti relationships. This will see site specific project oversight established by tangata whenua and cultural values management plans prepared alongside habitat restoration plans. We have successfully supported Whenua Maori Landowners of Pataua Island, completing year one of a 5 year NRC CPCA. This year a WWF application has enabled a similar process to begin with Ngāti Pukenga ki Pakikaikutu Charitable Trust and Whenua Maori landowners at Waikaraka, also supported by NRC.

VOLUNTEER PROFILE

We'd like to thank **Wayne Morris** for his contribution to conservation. We are grateful for his commitment, comradery and charisma! Forever jovial and enthusiastic, he's the man you want on your team! Being a RNZN Engineering Officer for 45 years taught him how to 'drill and fill'. Tēnā koe Wayne

Moth Plant Pod Amnesty Bin: During March and April the annual weed amnesty bin provided for the community was held again during moth plant podding season and asked people to dispose of their pods at the Parua Bay Community Centre site. The bin is always filled and a great engagement tool but in the future we will aim to educate the community that disposing of the vines is not necessary, as long as the cut or pulled stems do not have a chance to re-root.



WEED ACTION RECEIVES ANNUAL FUNDING FROM: THE NORTHLAND REGIONAL COUNCIL, WHANGAREI DISTRICT COUNCIL, WDC COMMUNITY GRANTS AND RECENTLY RECEIVED ONE FUNDING FROM FOUNDATION NORTH, LOTTERY ENVIRONMENT AND THE WORLD WILDLIFE FUND.

FUNDRAISING IS AN ONGOING PROCESS AND ANY SUPPORT, DONATIONS OR IDEAS FOR FUNDRAISING WILL BE WELCOMELY RECEIVED.

Please like us on Facebook

www.facebook.com/WeedActionWhangareiHeads

It's an easy way to keep up to date on Weed Action projects and events + a great way to interact with our/your community!